



COUNTY COUNCILLOR GRAHAM BUTLAND

MEMBER FOR THREE FIELDS WITH GREAT NOTLEY COUNTY DIVISION

ANNUAL REPORT

2023/24

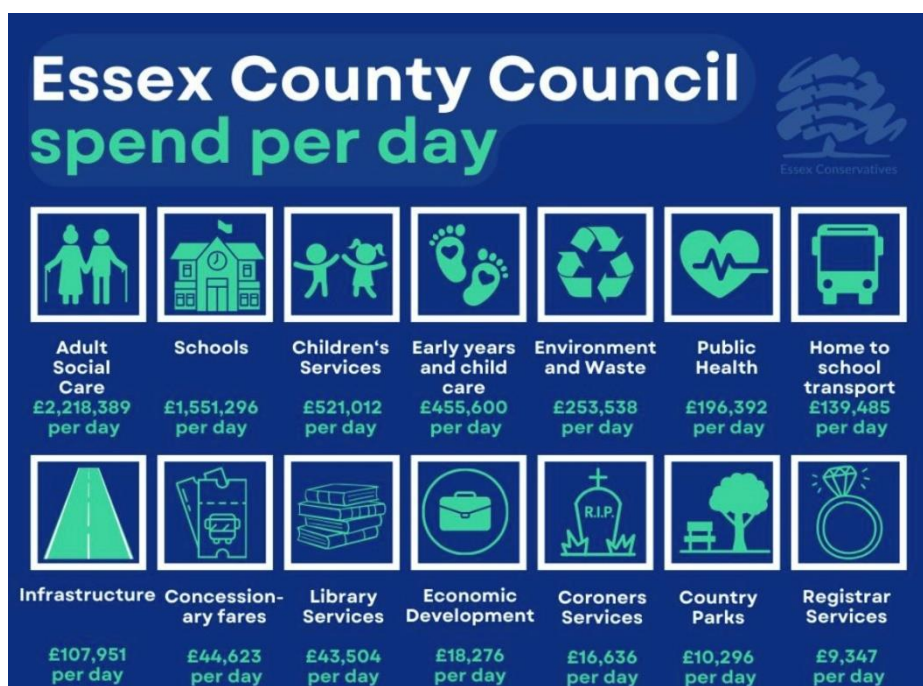
I have pleasure in submitting my Annual Report to the residents of Finchingfield Parish on the work of Essex County Council (ECC).

It has been another difficult year for ECC as it, like all local authorities, endeavours to cope with an ever increasing demand for its services. The Council has a total gross spend of just over £2 billion.

The breakdown of how the County Council spends your money is as follows:-



In terms of the **daily spend** this is shown on the chart below:-



The Council has also allocated an additional £12 million for priority work on our highways. Additional crews will help to prioritise repairs raised by local councillors and bring forward some of the surfacing and patching schemes required across our large county.



Last year the number of potholes repaired across Essex was nearly double the number repaired in the previous year.

During the year I have dealt with a number of issues raised by local residents and the Finchingfield Parish Council. In addition to the usual matters of potholes and planning the issue of the Asylum Centre at Wethersfield has created a significant amount of correspondence. I have also been engaged with the Parish Council on the issue of Finchingfield Bridge.

If you have a matter that you wish to raise please do not hesitate to contact me at [cllr.graham.butland@essex.gov.uk](mailto:cllr.graham.butland@essex.gov.uk)