

Talking Notes NOV - Finchingfield 25 NOV 7.30pm

County

You can follow GECCA developments here www.essexlgrhub.org

Your next GECCA consultation opportunity is NOV by UK Govt

UK Govt will decide on the Greater Essex Unitary Structure in MAR 2026 (3,4 or 5)

Your next vote will be MAY 2026 for Greater Essex Mayor

Mayoral candidates have been announced from Green, Conservative and Labour political parties.

There is a £5000 deposit for Essex Mayoral candidates, this compares with £10,000 for the Mayor of London and £500 for an MP.

There is no deposit required for County or District candidates.



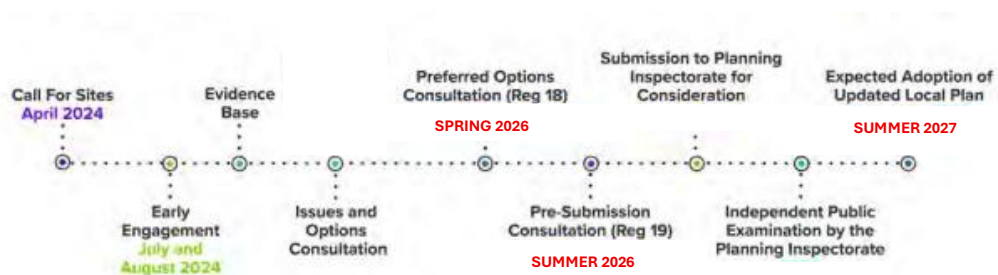
District : Local Plan Review

The Local Plan Review timescale has slipped.

The next Local Plan Sub Committee will be 11 DEC 2025 6.30pm and will revisit a range of sites selected by officers to meet the UK Govt housing target 2033 – 2041. 7 days notice is given for the Agenda which details which sites will be discussed (again).

The current UK Govt deadline for approved District Plans is 31 DEC 2026.

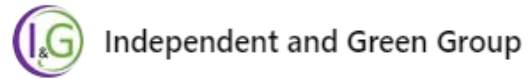
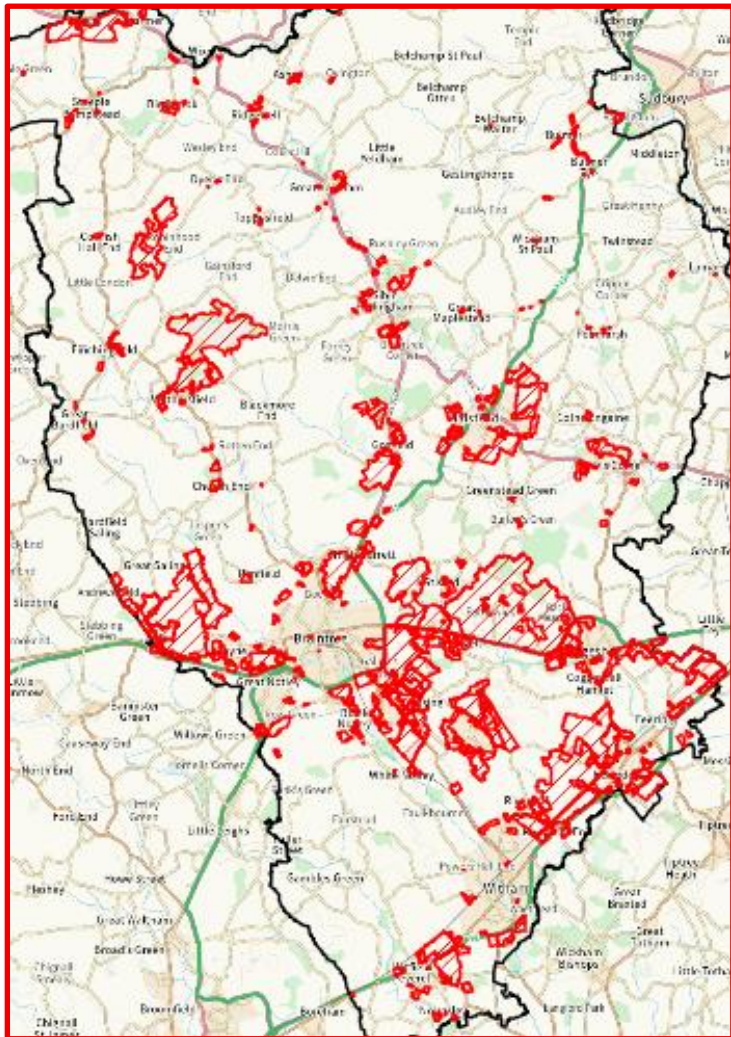
BDC's revised Local Plan Review timetable looks like this



We would like to acknowledge and thank all the residents, Parish teams including Neighbourhood Plan groups and others that have worked so hard, *again*, to represent communities so effectively in BDC's last Local Plan review before the new GECCA Mayor takes office.



UK Govt Housing Target for Braintree District years 2013 – 2033 – 14,000 houses
UK Govt Housing Target for Braintree District years 2033 - 2041 – 11,000 houses



[Opposition] motion was acceptably amended by the Majority group to become a substantive motion was unanimously supported at Full Council 27 OCT 2025

2. Substantive Motion:

2.1 "Council notes that Braintree District Council provides, through direct investment, Government grants, partnerships, developer contributions and other means; facilities, projects and services that benefit its residents. Such support covers a wide range of priorities including health, housing, economic development, open spaces, environmental and asset improvements.

Council also notes that the Local Plan Review will take the Braintree District Local Plan forward to 2041 with a large increase in allocated development of approx. 11,000 houses, in addition to the approx. 14,000 houses in the current Adopted Plan.

Council further notes that Local Government Reorganisation in Greater Essex will see Braintree District Council merge with other local councils into a new Unitary Authority where the future of Plan making carries uncertainties at the present time.

Council therefore agrees that even in this changing landscape, this Council reaffirms its position to do all it can with partners, to support the delivery of key services and community infrastructure that are fit for purpose to serve the residents of the Braintree district now and in the future focussed on Community, Prosperity and Environment.

Further, this Council commits to prioritising investment in services and facilities including in our villages. This is to ensure that new and future residents are properly supported and the impacts of future growth are mitigated."



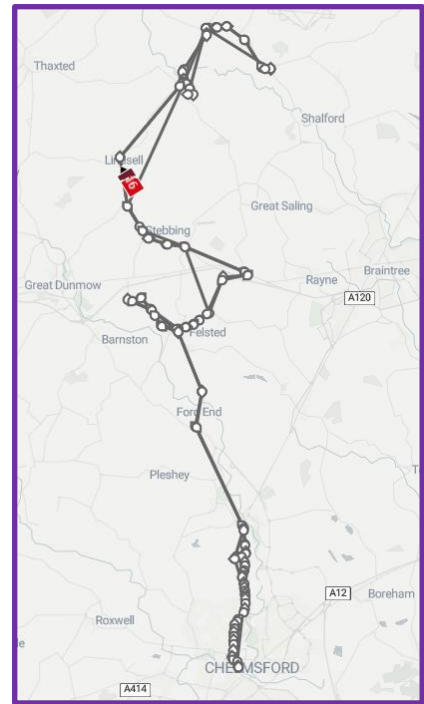
Full Council - 27th October 2025



More District News...

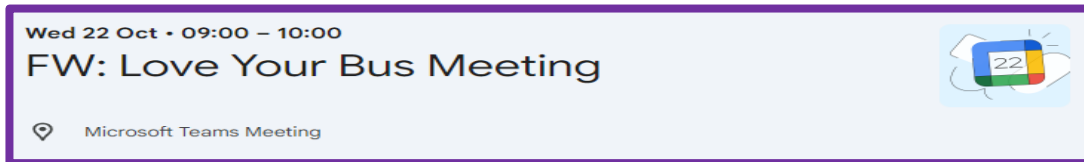


#16



We have reached out to the new operator but are awaiting contact to be established.

Hoping to have another Bus User Group session in the New Year!

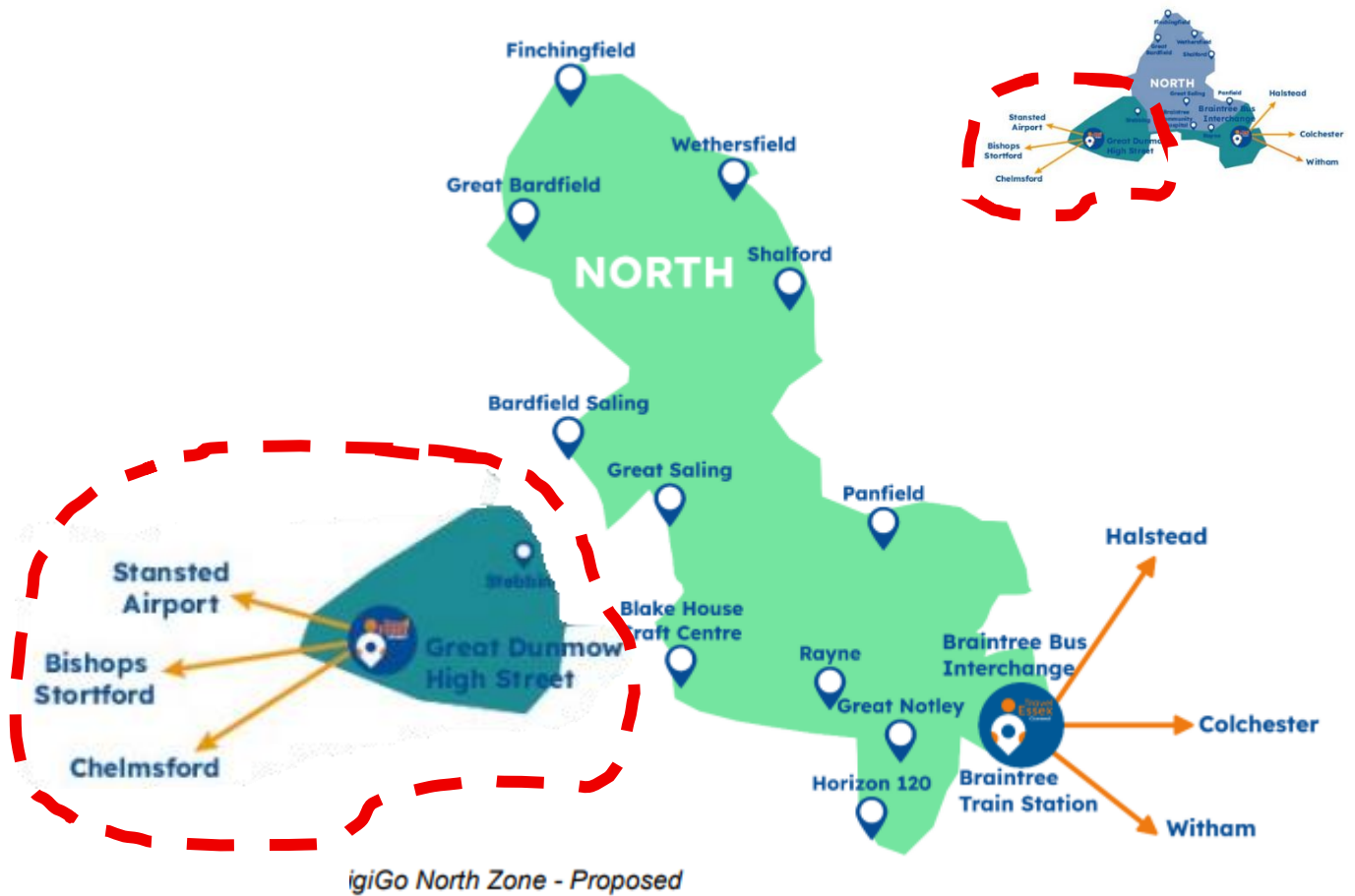


The LOVE YOUR BUS USER GROUP led by Shalford Parish Council and funded by Essex County Council’s grant met with DigiGo on 22 OCT to progress the spending of the £50K Grant money received to improve the North Zone service.

1852 North Zone passengers / month *(ave last 6 months)*



DigiGo consulting on **REDUCED** Service Zone with Dunmow/Stebbing removed.



Since NORTH ZONE establishment in JUL 2024, journeys to and from the Dunmow/Stebbing area have represented about 5% of the NZ total.

Ave Journey time to this area are 76% higher than the overall NORTH ZONE and operator states that this reduces availability of the service for most users.

The proposal to reduce the NORTH ZONE – excluding Stebbing and Gt Dunmow is made to improve availability and increase patronage in the smaller more densely populated area.

Local Bus Consultation 2025

Overview Closed 27 Oct 2025
Opened 4 Aug 2025

Essex County Council (ECC) is reviewing its support for 41 local bus services. We want your help to ensure that our future bus network is ready to meet new levels of passenger demand and is providing value for money. ECC is therefore carrying out this public consultation regarding these local bus services.

This consultation will commence **Monday 04 August 2025** and close on **Monday 27 October 2025**.

As set out in the accompanying questionnaire, ECC is undertaking a review of some of the local bus services which are paid for by Essex taxpayers. **It does not cover services/journeys operated commercially by transport providers.** This review covers all 12 districts in Essex with the view of assessing how to continue providing the service.

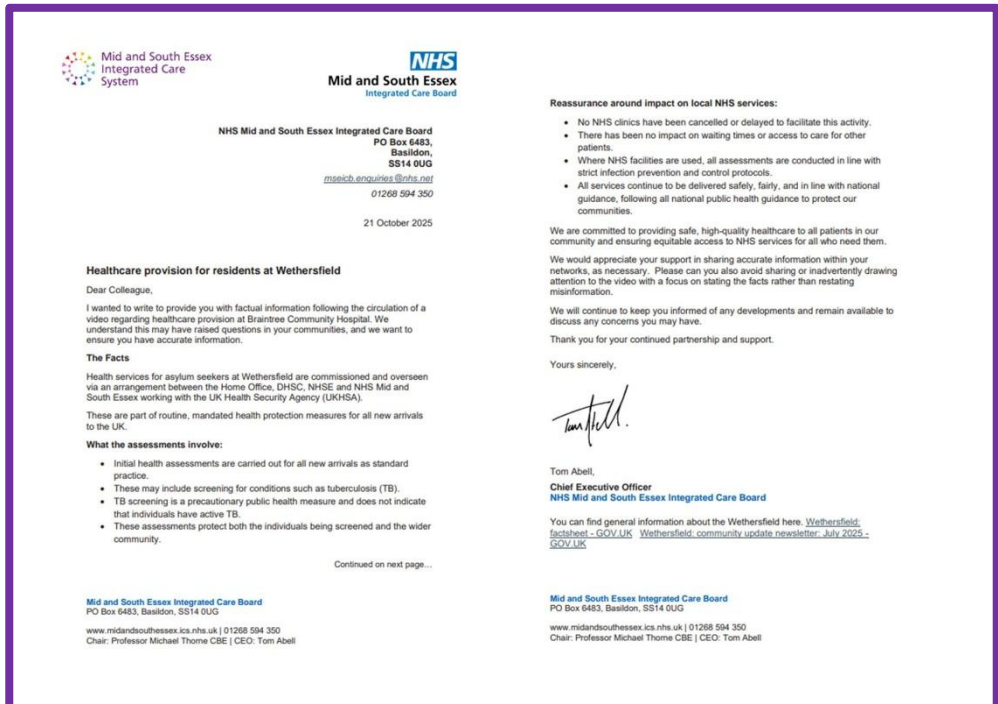


Wethersfield

Wethersfield Base Security became local news again in late OCT.

Please find attached letters in response to questions raised to East of England Ambulance service and Mid Essex Integrated Care Board (via BDC) about provision of resident services in the area as the Home Office has not reduced Service Users back to the safe cap of 800 during October (as they stated in July) and we now approach winter when NHS services are typically most under pressure.

Talking on BBC Essex on 24 OCT at 07.05



Local Acts of Remembrance

Piper in Finchingfield



Brilliant Bardfield Brass



Packed Panfield Pocket Garden and Katie bugling



Wonderful Wethersfield Armistice Day 11am

